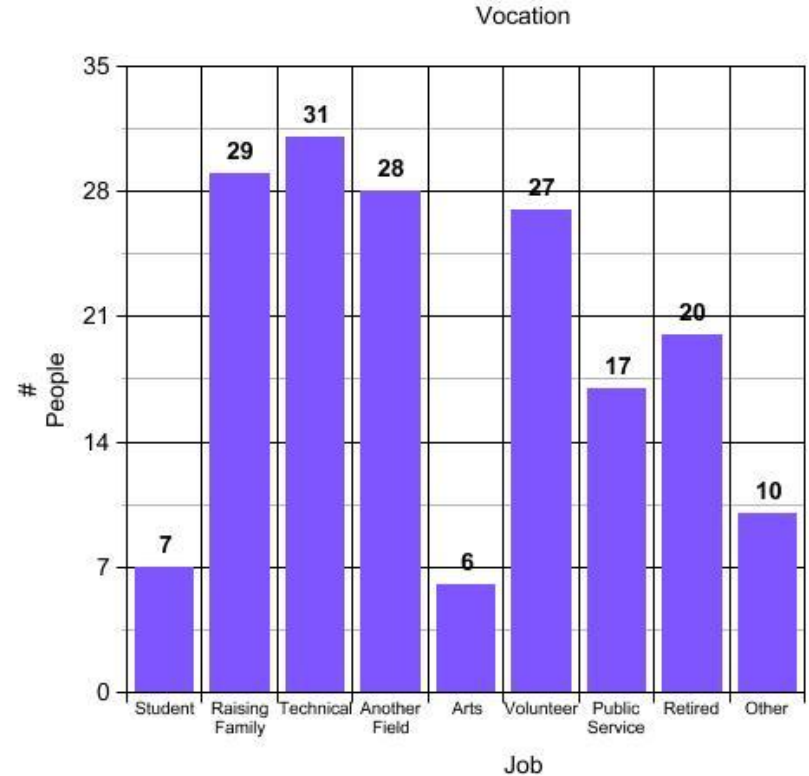
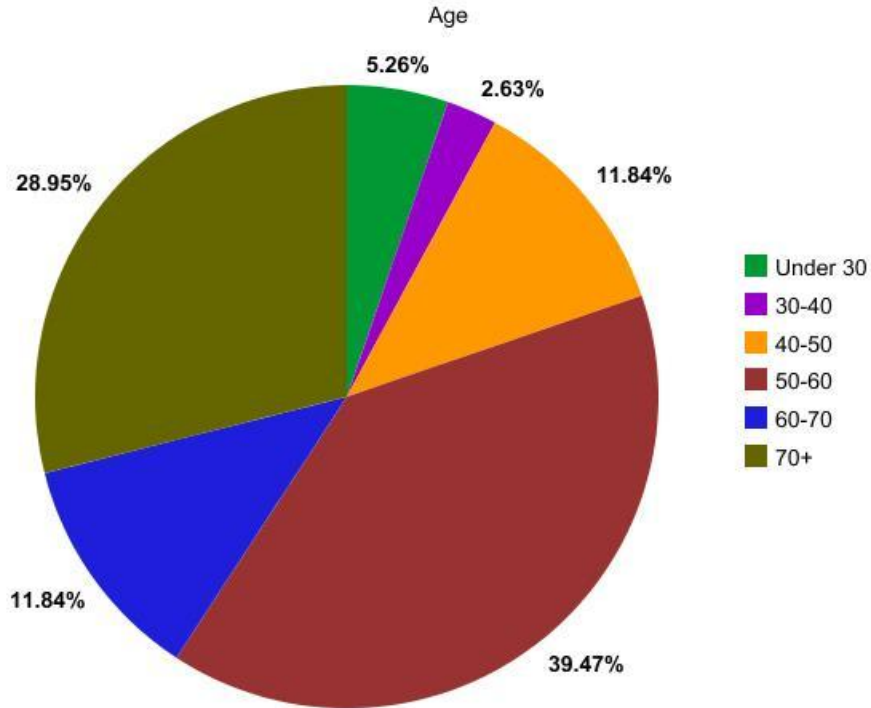


Cottage Meeting Survey Results

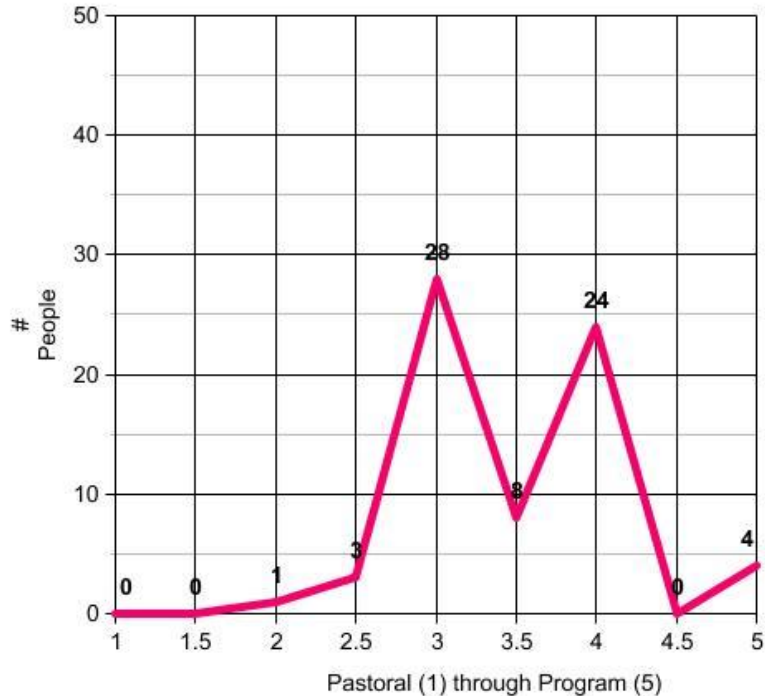
*Presented by the All Saints' Discernment Committee
Matt Hickcox, Liz Landers, Norm Douglas, Darren
Collins, Deb Forsberg, Emily Andrews*

Demographics

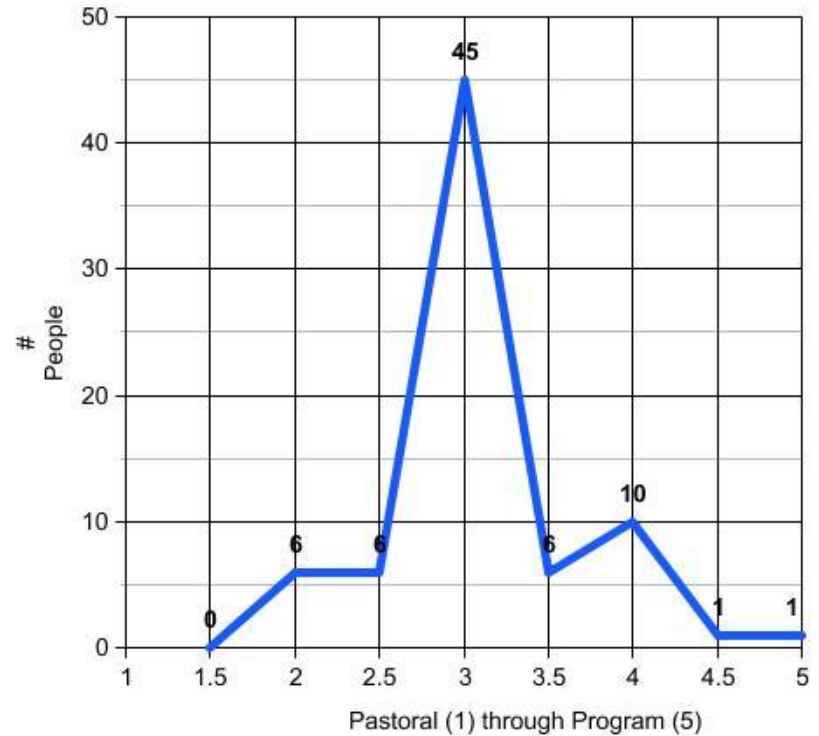


Program or Pastoral?

Program or Pastoral? NOW



Program or Pastoral? IN FUTURE



Are we meeting our needs?

	Current			3-5 Years		
	Little to None	Some	Lots	Little to None	Some	Lots
Directly From Priest-in-Charge	9	29	24	3	48	11
Support from Formal Ministry	33	11	6	25	24	5
Support from Self-Organized Group	17	17	10	11	30	6
Support from Friends at Church	4	18	40	2	28	35
Being Part of a Group or Ministry	5	19	38	3	22	37

How do we feel about growth?

How would you characterize All Saints' at the moment?

We exhibit behavior and practices of a church that wants to grow	16	21%
We seem happy to be the size we are and are working to keep our membership at current levels	26	34%
It is unclear how we, as a parish, feel about growth	30	39%
[left answer blank]	4	5%

How important is growth?

How important is parish growth to our mission as Christians?

Not important or not a significant part of our mission	7	9%
Would be nice to grow if we don't have to change our current structure too much	14	18%
Growing our parish is important but should be pursued in measured step	39	51%
Growth is very important and is worth additional resources and our potentially facing significant changes	10	13%
[left answer blank]	6	8%

What are we called to in mission?

	Decrease	Keep the same	Increase
Professional assistance to the Priest (e.g. Assistant Priest, Director of Education)	0	36	24
Worship services & music	2	53	12
Outreach ministries	1	31	34
Buildings and grounds	1	28	38
Sunday School	0	48	14
Adult education/formation	2	34	31
Fellowship & parish life activities	0	43	26

Spiritual Growth

How much are you focused on spiritual growth?

Little to none. I am mostly focused on other things on Sunday morning and in other parts of my life	5	7%
Some. I think about it at times and it is part of the reason I come to church.	33	43%
Significant. Spiritual growth is a large part of my Christian life.	28	37%
[left answer blank]	10	13%

Spiritual Growth

Where do you look for opportunities for spiritual growth?

Not applicable. I am not focused on spiritual growth.	3	4%
Mostly on Sunday mornings, in parts of the service and in adult education opportunities after church.	17	22%
Both at church and in other parts of my life.	54	71%
Mostly or completely outside of my time at church.	2	3%
[left answer blank]	0	0%

Your Spiritual Journey

Where do you consider yourself to be on your spiritual journey?

~I do not know, have not thought about this, or this is not important to me.-----	3	4%
~I am exploring a Life with God in Christ. I have a basic belief in God, but I am unsure about God's role in my life. I seek to build a firm foundation of spiritual beliefs. -----	15	20%
~I am growing in a Life with God in Christ. I have a personal relationship with God. I have made a commitment to trust God with my future in this life and the next, but I am just beginning to learn what it means to be in a relationship with God. I seek to develop a routine of personal spiritual practices that feed a growing intimacy with God. -----	24	32%
~I am deepening in my life with God in Christ. I depend on God, but I see God as someone who assists me in the things that are important to my life. On a daily basis, I turn to God for help and guidance for issues I face. I seek to surrender my heart and bring God's Kingdom on earth by making a significant impact on the lives of others. -----	24	32%
~I have a Christ-centered Life with God. I identify my relationship with God as the most important relationship in my entire life. I see my life as fully surrendered to God, subordinating everything to God's will and desires. -----	4	5%
~[left answer blank]-----	6	8%

Coming and Going

After your first visit, what made you come back a second and third time?

The Liturgy (the format of the church service)	22	29%
The Priest	27	36%
The sermon	19	25%
The music	25	33%
Sunday school program	12	16%
Adult education opportunities	1	1%
Friendliness of parishioners	29	38%
Inclusion statement	15	20%
The size of the church and number of participants	7	9%
The demographic make-up of the parish	6	8%
The “spirit” of the place, the general feeling of excitement	22	29%

What would make you leave?

What changes would make you think about going to another church? Pick the top one or two reasons.

A change in Priest	19	25%
The “direction” of the church (e.g. political, conservative/liberal, teachings)	37	49%
Your family situation (e.g. your children go off to college)	4	5%
The change or loss of a specific ministry (e.g. youth group, outreach, music)	9	12%
Church size (church shrinks or grows too much)	4	5%
Specific people (friends) stop going to All Saints’	0	0%
None of the above. I feel committed to being part of this community that is doing God’s work, even when changes occur	24	32%

Do we like consistency?

How do you feel toward the Episcopal Church's desire to have a consistent Liturgy?

The familiar and consistent pattern of the Liturgy is important to me.	50	66%
I want the Sunday service to cover the basics such as readings, prayers, sermon, and Eucharist, but the order of it is not very important to me.	16	21%
A consistent Liturgy is not important to me.	5	7%
[left answer blank]	5	7%

How much variety is okay?

How much would you encourage the Priest & worship commission over the next 3 - 5 years to insert variety into the service while still following the format of the Liturgy?

I would prefer to stick with the Book of Common Prayer and 1982 hymnal most or all of the time.	5	7%
I like the occasional, perhaps seasonal changes to such things as the prayers of the people or Eucharist setting.	58	76%
I like a lot of variety in the Sunday service and music. Stick it in as much as possible.	11	14%
[left answer blank]	2	3%

Outreach

Where should our outreach efforts be focused in the next 3 – 5 years? Pick one.

Mostly local communities and nearby towns where our parishioners live	23	30%
A mix of local communities and farther away locations in need	52	68%
Primarily on world-wide locations with the most need	0	0%
[left answer blank]	1	1%

Outreach

What is the best way to organize and run outreach programs? Pick one.

Should be run by a formal ministry with parish-wide funding	6	8%
A mix of self-led groups and formal ministries	59	78%
Self-led groups that form out of personal ideas and passions	6	8%
[left answer blank]	5	7%

How much outreach?

How do you perceive our overall level of outreach as a church? Pick one.

Too little	15	20%
Reasonable for our size parish	52	68%
Too much of a focus in our church	1	1%
[left answer blank]	8	11%

How do you reach out?

How are you currently involved with outreach? Pick all that apply.

Not much or none at all	21	28%
Through a church ministry or self-led group	34	45%
Community service through work	12	16%
Community service in my neighborhood and home town	13	17%
Support for a world-wide mission (e.g. Save the Children)	9	12%
Other	1	1%